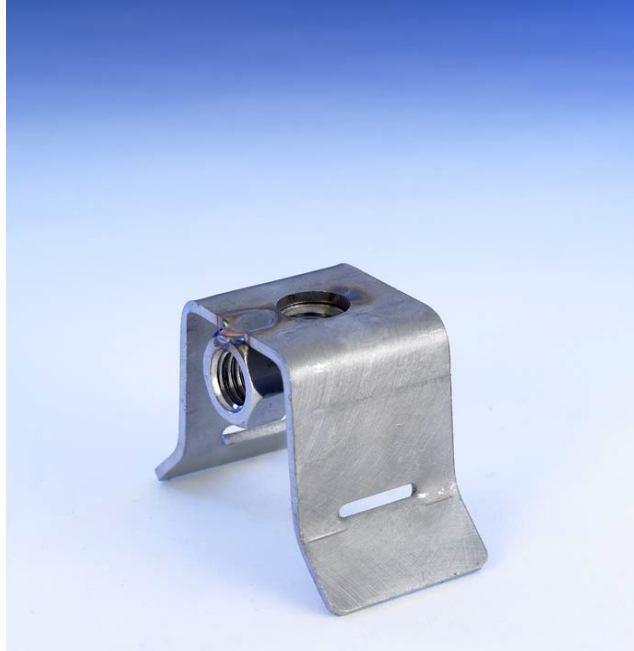




LightningMaster
Corporation

AIR TERMINAL SADDLE BASE STAINLESS STEEL LM-SB-SS-L



APPLICATION: This saddle base is used for securing an air terminal to pipes larger than 6" in diameter.

DESCRIPTION: UL listed stainless steel w/ 1/2" nut & hose clamp (Fits up to 10" pipe, additional hose clamps will be needed for pipes larger than 10") mounts vertical & horizontal.

NOTE: Also available with an attached cable clip for running cable along PVC or any non-conductive material. (Part # LM-SBMC-SS)

©2021 Lightning Master Corporation
This data sheet is confidential and all rights are reserved. It shall not be reproduced, copied, for any other purpose than for which it is specifically furnished.

2100-A Palmetto St., Clearwater, FL 33765
800-749-6800

lightningmaster.com