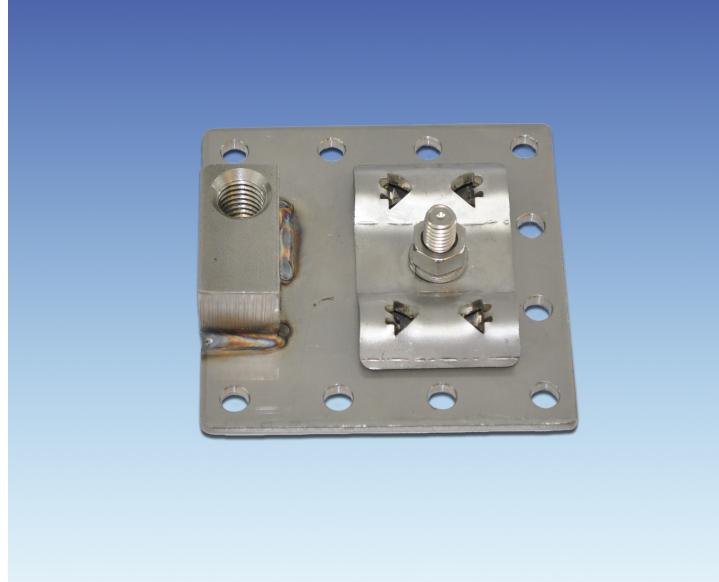




LightningMaster
Corporation

UNIVERSAL FLAT AIR TERMINAL BASE EF3; @>7EEF77> 4;? 7F3>>;5 D3F76 LM-FAB-EE



APPLICATION: This is an universal air terminal base used in the industry. Mostly used in industrial applications in corrosive environments. It may be used as a Bi-metal connector or transition.

DESCRIPTION: Stainless steel 1/2" thread base intended for installation on flat surfaces for horizontal mounting. Utilizes a variety of mounting methods, including self tapping screws, smashpins or adhesives.

©2021 Lightning Master Corporation

This data sheet is confidential and all rights are reserved. It shall not be reproduced, copied, for any other purpose than for which it is specifically furnished.

2100-A Palmetto St., Clearwater, FL 33765
800-749-6800

lightningmaster.com