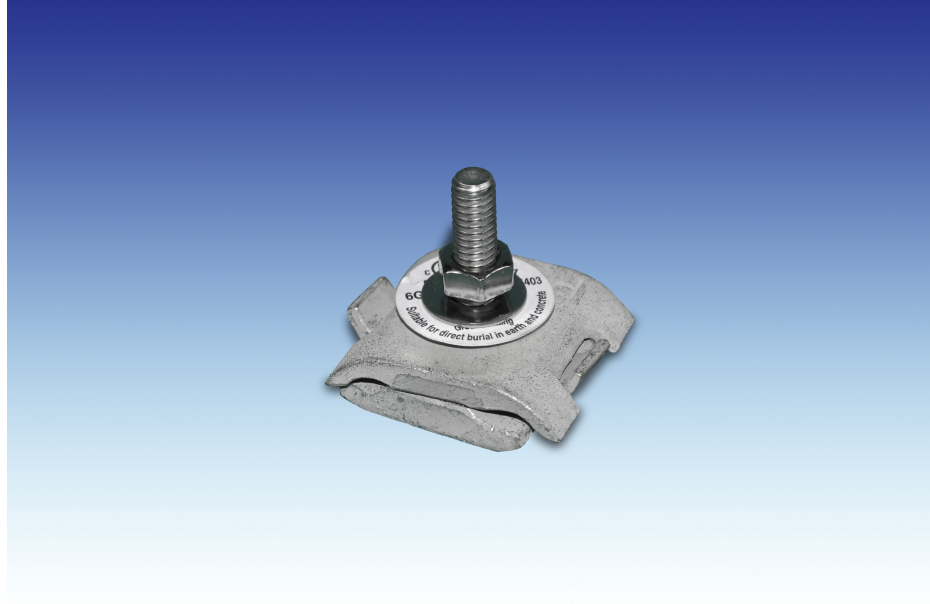




LightningMaster
Corporation

UNIVERSAL CABLE SPLICE TINNED COPPER LM-CN-SPLICE-TC



APPLICATION: Innovative pressed bolt design ensures a smooth flat surface; no damage when used on membrane roofs and provides greater ease of installation.

DESCRIPTION: Tinned copper bolt cross run splicer. Approximately 2" square, two piece connector provides 1-1/2" surface contact between conductors. Accepts all lightning conductors and rods up to 5/8" in diameter and grounding conductors from #6 AWG up to 250 MCM.

©2021 Lightning Master Corporation

This data sheet is confidential and all rights are reserved. It shall not be reproduced, copied, for any other purpose than for which it is specifically furnished.

2100-A Palmetto St., Clearwater, FL 33765
800-749-6800

lightningmaster.com