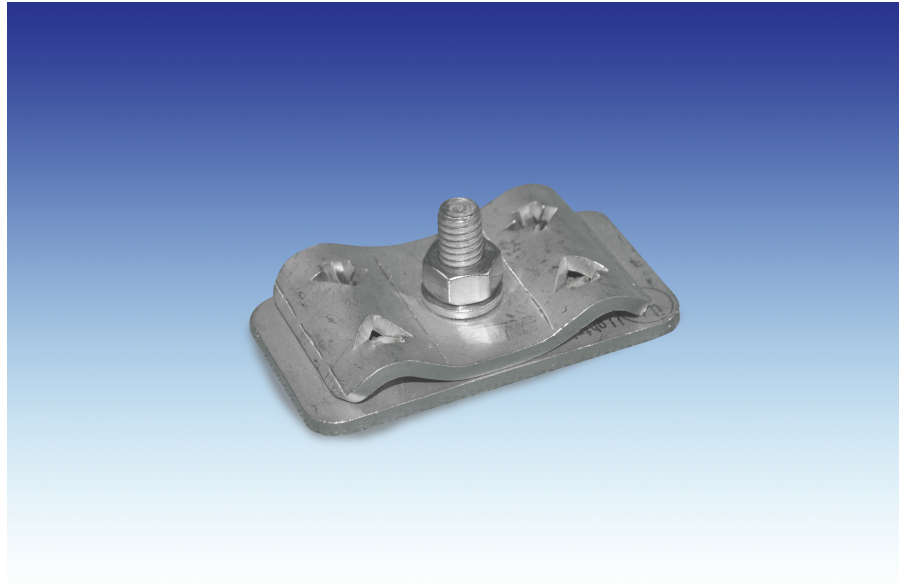




**LightningMaster**  
Corporation

# UNIVERSAL CABLE SPLICE STAINLESS STEEL BIMETALLIC RATED LM-CN-SPLICE-SS-L



**APPLICATION:** Innovative pressed bolt design ensures a smooth flat surface; no damage when used on membrane roofs and provides greater ease of installation.

**DESCRIPTION:** Stainless steel cast parallel cable placer with single bolt tension and 1-1/2" of contact on cables and wires. Splicer may be used with full size cables or secondary bonding wire.

©2021 Lightning Master Corporation

*This data sheet is confidential and all rights are reserved. It shall not be reproduced, copied, for any other purpose than for which it is specifically furnished.*

2100-A Palmetto St., Clearwater, FL 33765  
800-749-6800

**lightningmaster.com**