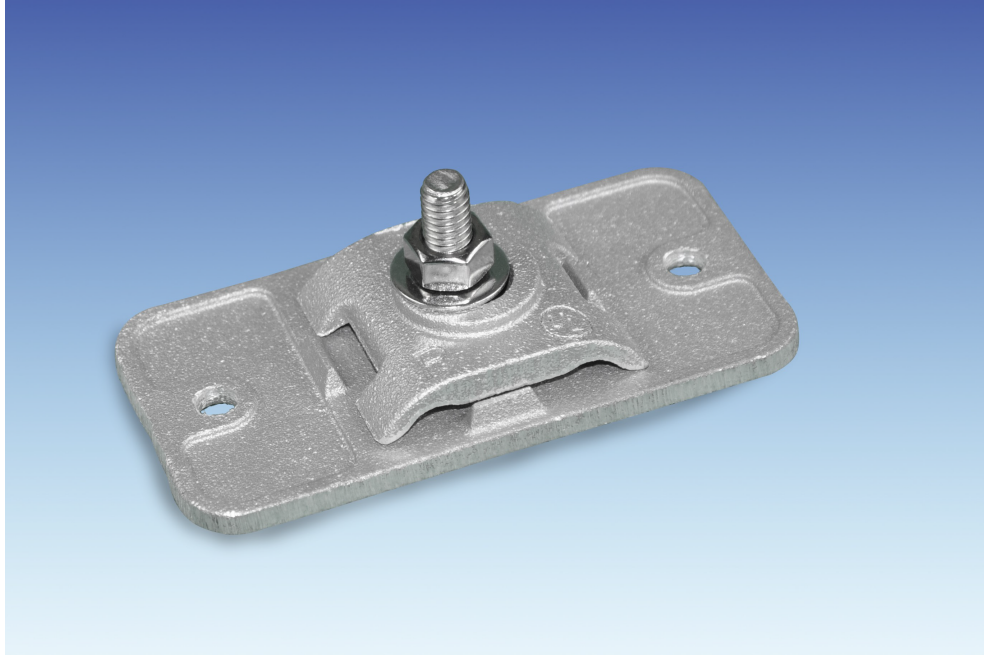




LightningMaster
Corporation

BONDING PLATE ALUMINUM LM-BP-8-A



APPLICATION: For use with all full size and secondary cable.

DESCRIPTION: Approximately 2-1/2" x 3-1/4" cast bonding plate provides over 8 square inches of bonding surface. Dual pressure cable connector will accept all main size conductors up to 9/16" in diameter.

©2021 Lightning Master Corporation

This data sheet is confidential and all rights are reserved. It shall not be reproduced, copied, for any other purpose than for which it is specifically furnished.

2100-A Palmetto St., Clearwater, FL 33765
800-749-6800

lightningmaster.com